

Gabrielle (Gabby) Ibvijaro, UK

Professor and GP Medical Director in London, and specialist in primary care mental health and service re-design. Worked in collaboration with WHO to produce ground-breaking policy document 'Integrating Mental Health into Primary Care' (2008). Has published widely in peer reviewed journals and edited 'Companion to Primary Care Mental Health' (2012) an international collaboration of 110 authors from all continents, to promote access to and delivery of primary care mental health globally. Chaired the Case for Change for Mental Health for London, UK in 2011 and contributed to the Mental Health Service Pack in the European Union. President-elect of World Federation for Mental Health.



Christos Lionis, Greece

Professor of General Practice and Primary Health Care, and Director of the Clinic of Social and Family Medicine within the School of Medicine at the University of Crete. He has extensive experience in implementing educational and research initiatives within PHC with over 250 peer-reviewed publications. Leads a research group focused on multidisciplinary approaches to health care, and consideration of social and psychological factors affecting health. Has led multiple large scale collaborative research programs within Greece and the European Union including the development of National Greek Guidelines for depression and generalized anxiety disorder.



Juan Mendive, Spain

Family physician in Barcelona, Spain working in an academic primary care community centre, with training and research links to the University of Barcelona. Past international officer for the Spanish Society of Family and Community Medicine (SemFYC). A Board and founding member of the European Depression Association, he has just completed his PhD research on primary prevention of depression in primary care, with special interest on cost-utility analysis considering health related quality of life.



Donald Nease Jr, USA

Associate Professor of Family Medicine at the University of Colorado – Denver, and Director of Community Engagement and Research for the Colorado Clinical and Translational Sciences Institute, Vice Chair for Research in the Department of Family Medicine and Director of Practice Based Research at the Colorado Health Outcomes Program. Dedicated to improving health from the level of individual doctor-patient interactions to community and population based interventions, his research is conducted largely within communities and their primary care practices, most notably in the areas of Chronic Illness, esp. Mental Health, and Systems Change



Henk Parmentier, UK

South London GP with special interest in Mental Health and related primary care research. Member of the World Federation of Mental Health, co-editor of the Journal Mental Health in Family Medicine and visiting research fellow at the Institute of Psychiatry, London. Executive committee member of the charity Primary Care Mental Health & Education and an advisory board member of the European Forum of Primary Care. Primary Care Lead of the South London and South East Hub of the Mental Health Research Network, and co-author of "Companion to Primary Care Mental Health".



Michael Klinkman, USA

Family doctor with over 25 years' experience in clinical practice, research and education in primary care mental health, health information technology, and healthcare systems design. Professor of Family Medicine at the University of Michigan (USA), directs the Great Lakes Research into Practice Network and the Jackson Health Network, and serves as Chair of the WONCA International Classification Committee and Deputy Chair of the WHO ICD-11 Primary Care Consultation Group on mental health. Current work focuses on systems change to improve mental health treatment in primary care.



Wonca

World family doctors. Caring for people.

Contact Person

Professor Christopher Dowrick

Email: mhconsult@wonca.net

Or

Dr Garth Manning

Email: ceo@wonca.net



Wonca

WONCA – the World Organization of Family Doctors – is delighted to offer international consultancy services in primary mental health care, through its Working Party on Mental Health.



WONCA works closely with WHO and fully supports the WHO **mhGAP** programme, and is pleased to tailor consultancy services specifically to support the mhGAP programme.



Primary health care has a key role to play in the management of mental health. The integration of mental health with primary care improves identification and treatment rates for priority

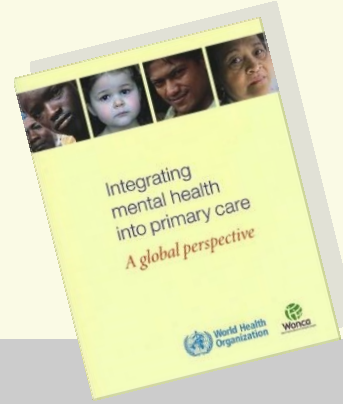
mental disorders. It also promotes access and holistic care for comorbid physical and mental health problems.

The WHO Mental Health Gap Action Programme (mhGAP) is designed to scale up services for mental, neurological and substance use disorders, especially for low- and middle-income countries.

As part of its commitment to improving mental health care in the community, WONCA strongly endorses the WHO mhGAP programme and is pleased to work in partnership towards its successful implementation.

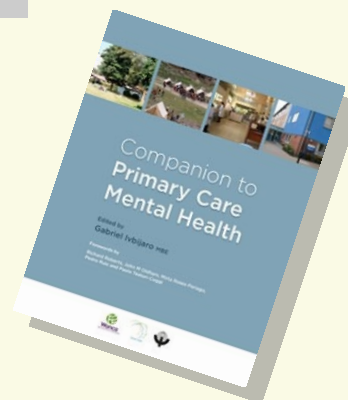


Drawing on a wealth of knowledge and experience, WONCA's primary care experts in mental health are available to provide a range of international consultancies. These are designed to enable low-income and middle-income countries to maximize the integration of primary and mental health care within the mhGAP framework



Our consultancies include :

- **Policy:** development of primary mental health care services; integration of mental health and primary care professionals; mhGAP planning and implementation: designing programmes to enable health ministries to develop teams and indicators to implement mhGAP at primary care and community levels;.
- **Education and training:** creation, delivery and evaluation of primary mental health care education and training programmes; focus on how to screen, diagnose and manage common mental health problems in primary care and community settings, adapted to meet the needs of specific national cultural contexts.
- **Research:** advice on identification of primary mental health care research priorities and funding opportunities; collaboration on implementation and evaluation of research projects.



Panel of Primary Care Mental Health Experts



Abdullah Al-Khathami, Saudi Arabia

Supervisor of the Primary and Community Mental Health Program and Director of Postgraduate Family Medicine program in Eastern Province of Saudi Arabia. Member of Saudi Psychiatric Association, editorial board member of the Journal of Mental Health in Family Medicine and vice-chair of the WONCA Working Party on Mental Health

Adekunle Joseph Ariba, Nigeria

Chief Consultant and Head of Department of Family Medicine, Olabisi Onabanjo University Teaching Hospital. Immediate past Faculty Secretary National Postgraduate Medical College of Nigeria (NPMCN) and Internal Assessor (faculty examinations), NPMCN. Past vice-president of the Society of Family Physicians of Nigeria and Secretary of the WONCA Working Party on Mental Health



Christopher Dowrick, UK

Family doctor and Professor of Primary Medical Care in the University of Liverpool, with many years experience in primary care mental health. Board advisor for Mersey Care NHS Trust, senior investigator for the English National Institute for Health Research and professorial research fellow in the University of Melbourne. Adviser to WHO on primary care aspects of new country work with mhGAP, internationally.

Sandra Fortes, Brazil

A psychiatrist since 1985, with experience in clinical practice, research and education in primary care mental health. Associate Professor of Medical Psychology and Mental Health in the University of Rio de Janeiro State (UERJ) in Brazil, with PhD in Public Health. Supervisor of Family Medicine, Psychiatry and Medical Psychology Residence Programs, and trainer of professionals in primary care mental health.



Luis Galvez, Spain

Current Chair of the WONCA Working Party on Mental Health and family physician since 1985. Vice President of the Spanish Society of Family and Community Medicine (SemFYC) from 2003 to 2007 and member of the Ethic Committee of Clinical Trials in Carlos Haya Teaching Hospital in Málaga from 2001 to 2005. He has been involved in projects and a PhD thesis dealing with mental health problems in primary care.

Jane Gunn, Australia

Professor of Primary Care Research at The University of Melbourne, Australia and Head of the Department of General Practice. She leads a research program in mental health and has provided research supervision and mentorship to students and practitioners from many countries. Over 130 peer-reviewed research publications and has delivered primary mental health care training in China, Hong Kong and New Zealand.



Evelyn van Weel-Baumgarten, Netherlands

Over 20 years experience in clinical practice, research and education on clinical communication skills and on mental health. Family doctor and associate Professor at the Department of Primary and Community care at Radboud University medical center in Nijmegen, co-ordinating the clinical communication program. Her mental health focus is on depression and on problem solving treatment, with significant related research and publications. President-elect of the European Association of Communication for Health Care (EACH).